



**TAKING  
YOU  
FURTHER**  
APU PostGrad

**A . P . U**  
ASIA PACIFIC UNIVERSITY  
OF TECHNOLOGY & INNOVATION

# Master of Applied **PSYCHOLOGY** **CYBERPSYCHOLOGY**

Connected world. Complex minds.

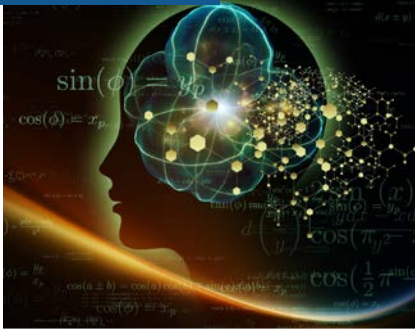


2027



**100% Online**

100% Online



#### Duration:

ODL - 2+ years

#### This programme is specifically designed to provide:

- **Digital Mind & Behavior:** Build a deep understanding of how digital spaces—like social media, AI, and virtual reality—shape human thoughts, identity, and actions.
- **Cybersecurity & Online Risks:** Gain practical insights into real-world digital issues, including online deception, internet safety, cyber forensics, and digital well-being.
- **Data & Research Skills:** Master advanced tools in data analysis, psychology testing, and both quantitative and qualitative research built for digital environments.
- **Ethics & Hands-On Practice:** Learn to navigate ethical challenges like algorithmic bias and data privacy, then apply these skills in a real-world internship and research project.

#### Career options

- User Experience (UX) Researcher
- Behavioral Product Designer
- Digital Well-being Consultant
- Tech Sector People & Culture Strategist
- Cyber-Workforce Wellness Manager
- Policy Advisor (Digital Risks & Mental Health)
- Cyberpsychology Research Scientist
- Digital Mental Health Programme Coordinator
- Media Literacy Educator
- Telehealth Experience Designer



# Master of Applied Psychology in CYBERPSYCHOLOGY (ODL)



(N-DL/0313/7/0025)(06/30)(MQA/PA18241)

## The Benefits of the Programme

- **First-Mover Advantage:** Join one of the few specialised postgraduate programmes in Asia that directly addresses the intersection of psychological science and the "Human 5.0" digital landscape.
- **Comprehensive Core-to-Elective Pipeline:** Balance essential psychological foundations (Ethics, Research Methods, Psychometrics) with cutting-edge specialisation tracks like Forensic Cyberpsychology and Workforce Mental Health.
- **Industry-Aligned Practicum:** Gain direct, supervised professional experience, allowing students to apply cyberpsychological theories to actual organisational or community challenges.
- **Dual-Perspective Competency:** Develop a unique dual fluency—understanding both the psychological needs of the user/employee and the technical architecture of the digital platforms they inhabit.
- **Future-Proof Skillset:** Acquire highly transferable skills in behavioral data analysis, digital risk mitigation, and ethical AI implementation that remain resilient to rapid technological shifts.

## Who Should Attend

- This programme is meticulously designed for ambitious professionals and graduates aiming to pioneer the next frontier of behavioural science:
- **Psychology & Social Science Graduates:** Individuals holding a bachelor's degree in psychology, counseling, or related disciplines who want to specialise in the rapidly expanding domain of cyberspace and digital behavior.
  - **Tech & Design Professionals:** UX/UI researchers, product managers, software developers, and AI designers who want to deeply understand the psychological impact of their tech designs and optimise user engagement ethically.\*\*
  - **Cybersecurity & IT Specialists:** Professionals looking to master the "human element" of cybersecurity, understanding social engineering, insider threats, and the cognitive load of tech teams.\*\*
  - **HR & Corporate Wellness Managers:** People operations professionals tasked with managing remote workforces, digital burnout, and the overall mental well-being of a highly digitised workforce.
  - **Law Enforcement & Policy Professionals:** Analysts, legal professionals, and policy makers aiming to understand digital deception, cyber-crime behavioural, and national digital health frameworks.\*\*

## Modules & Practicum

This programme includes 10 modules: 9 coursework modules and 1 practicum. There are 8 compulsory Core Modules and you will have to choose 2 elective modules from those listed.

### Core Modules

- Core Concepts of Cyberpsychology
- Research Methods & Statistics
- Ethical and Professional Issues in Psychology
- Mental Health of Cyber Workforce
- Psychometric Testing
- Research Project
- Forensic Cyberpsychology
- Practicum

### Elective Modules (Choose 2)\*

- Cyberpsychology of Deception **OR** Consumer & Media Cyberpsychology
- Cybercognition & Behaviour **OR** Social Psychology in Cyberspace

\* Elective modules may be pre-selected. If students wish to change these pre-selected elective modules, they can choose from the available modules offered in the timetable **OR** among the intensive delivery modules - however such changes may prolong the study duration.

## Practicum

Practicum equips students with essential skills for career growth in digital intervention design, online behavior training, and technological psychological development. Students will apply their knowledge in a chosen digital, clinical, research or corporate setting - designing, delivering, and reflecting on a cyberpsychology-based initiative or session. They will receive professional supervision and feedback, using it to continuously improve and achieve key industry competencies in applied cyberpsychology.

\*\* Applicants without a Psychology-related Bachelor's degree must pass the pre-requisite modules (45 credits) to continue with the Master's Degree.

*This programme was designed in collaboration with the Cyberpsychology Research Group, University of Sydney, Australia & De Montfort University, Leicester UK.*

